

**50**  
1968-2018  
YEARS/ANOS

# Aluminum Cable ladders



**BE Basor**  
CABLE TRAY SPECIALIST



US HEADQUARTERS

**BASOR ELECTRIC INC.**

604 Mulberry street  
Milstadt, Illinois 62260  
Toll Free: 844 393 3985  
customer.service@basor.com



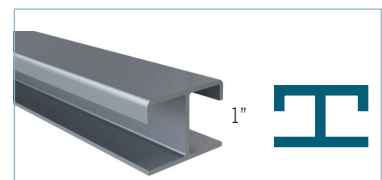
# Aluminum Cable ladders

---

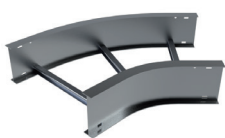
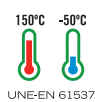




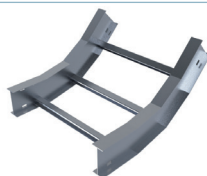
# BasorTRAV



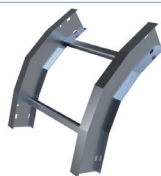
BasorTRAV



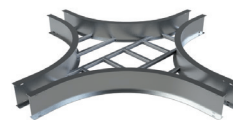
CPI



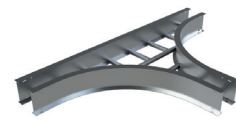
CCI



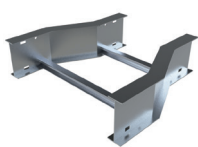
CXI



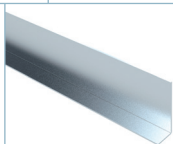
CRI



TEI



RCI



PSI



JUI



JUI-A



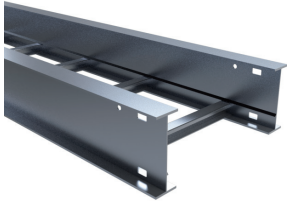
JUI-B



BEV

Filling Area							
B		H4"		H5"		H6"	
inch	mm	in <sup>2</sup>	cm <sup>2</sup>	in <sup>2</sup>	cm <sup>2</sup>	in <sup>2</sup>	cm <sup>2</sup>
9"	230	25,5	164	34,5	222	43,5	280
12"	300	34,1	219	46,1	297	58,1	374
18"	450	51,1	329	69,1	445	87,1	561
24"	600	68,2	439	92,2	594	116,2	749
30"	750	85,2	549	115,2	743	145,2	936
36"	900	102,3	659	138,3	892	174,3	1124

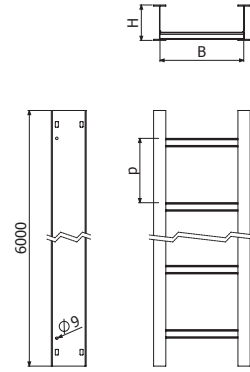
**IL H4**  
(NEMA 16A / 12C)



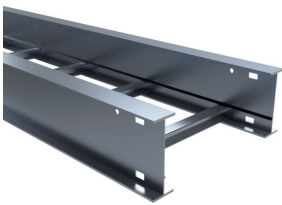
L = 6 m (20 ft)

	B		H		AL
	inch	mm	inch	mm	p = 9" (230 mm) REF
IL 9x4-p 6M	9	230	4	100	210325
IL 12x4-p 6M	12	300	4	100	210326
IL 18x4-p 6M	18	450	4	100	210327
IL 24x4-p 6M	24	600	4	100	210328
IL 30x4-p 6M	30	750	4	100	210329
IL 36x4-p 6M	36	900	4	100	210330

2 x JUI 4 ( 211220)



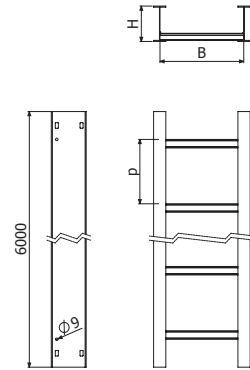
**IL H6**  
(NEMA 20A / 16B / 12C)



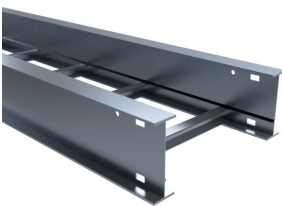
L = 6 m (20 ft)

	B		H		AL
	inch	mm	inch	mm	p = 9" (230 mm) REF
IL 12x6-p 6M	12	300	6	150	210338
IL 18x6-p 6M	18	450	6	150	210339
IL 24x6-p 6M	24	600	6	150	210340
IL 30x6-p 6M	30	750	6	150	210341
IL 36x6-p 6M	36	900	6	150	210342

2 x JUI 6 ( 211222)



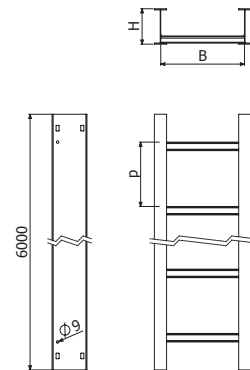
**IR H6**  
(NEMA 20C)



L = 6 m (20 ft)

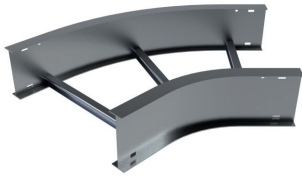
	B		H		AL
	inch	mm	inch	mm	p = 9" (230 mm) REF
IR 9x6-p 6M	9	230	6	150	210451
IR 12x6-p 6M	12	300	6	150	210452
IR 18x6-p 6M	18	450	6	150	210453
IR 24x6-p 6M	24	600	6	150	210454
IR 30x6-p 6M	30	750	6	150	210455
IR 36x6-p 6M	36	900	6	150	210456

2 x JUI 6 ( 211222)

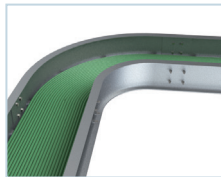




### CPI H4

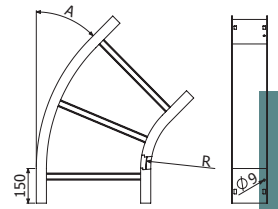
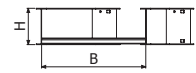


CPI 'A' - 'R' 'B'x'H'



	A (°)	R		B		H		AL
		inch	mm	inch	mm	inch	mm	REF
CPI45-12 9x4	45	12	300	9	230	4	100	210484
CPI45-12 12x4	45	12	300	12	300	4	100	210485
CPI45-12 18x4	45	12	300	18	450	4	100	210486
CPI45-12 24x4	45	12	300	24	600	4	100	210487
CPI45-12 30x4	45	12	300	30	750	4	100	210488
CPI45-12 36x4	45	12	300	36	900	4	100	210489
CPI-12 9x4	90	12	300	9	230	4	100	210491
CPI-12 12x4	90	12	300	12	300	4	100	210492
CPI-12 18x4	90	12	300	18	450	4	100	210493
CPI-12 24x4	90	12	300	24	600	4	100	210494
CPI-12 30x4	90	12	300	30	750	4	100	210495
CPI-12 36x4	90	12	300	36	900	4	100	210496

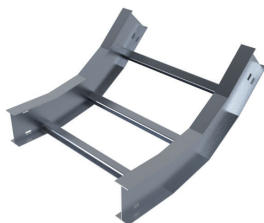
2 x JUI 4 ( 211220)



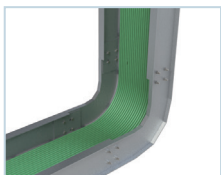
CPI 'A' - 'R' 'B'x'H'

BasorTRAV

### CCI H4

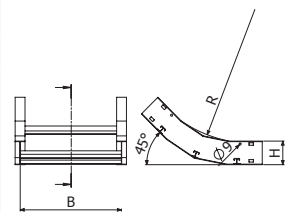


CCI 'A' - 'R' 'B'x'H'



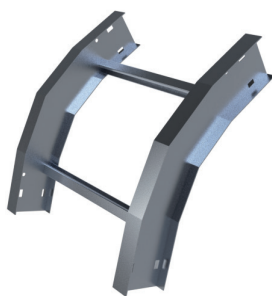
	A (°)	R		B		H		AL
		inch	mm	inch	mm	inch	mm	REF
CCI45-12 9x4	45	12	300	9	230	4	100	210655
CCI45-12 12x4	45	12	300	12	300	4	100	210656
CCI45-12 18x4	45	12	300	18	450	4	100	210657
CCI45-12 24x4	45	12	300	24	600	4	100	210658
CCI45-12 30x4	45	12	300	30	750	4	100	210659
CCI45-12 36x4	45	12	300	36	900	4	100	210660
CCI-12 9x4	90	12	300	9	230	4	100	210662
CCI-12 12x4	90	12	300	12	300	4	100	210663
CCI-12 18x4	90	12	300	18	450	4	100	210664
CCI-12 24x4	90	12	300	24	600	4	100	210665
CCI-12 30x4	90	12	300	30	750	4	100	210666
CCI-12 36x4	90	12	300	36	900	4	100	210667

2 x JUI 4 ( 211220)



CCI 'A' - 'R' 'B'x'H'

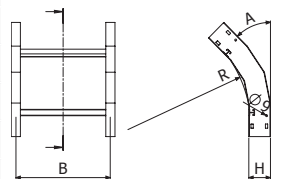
### CXI H4



CXI 'A' - 'R' 'B'x'H'

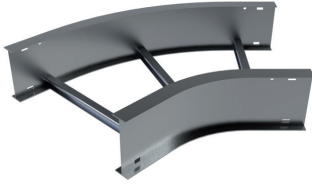
	A (°)	R		B		H		AL
		inch	mm	inch	mm	inch	mm	REF
CXI45-12 9x4	45	12	300	9	230	4	100	210826
CXI45-12 12x4	45	12	300	12	300	4	100	210827
CXI45-12 18x4	45	12	300	18	450	4	100	210828
CXI45-12 24x4	45	12	300	24	600	4	100	210829
CXI45-12 30x4	45	12	300	30	750	4	100	210830
CXI45-12 36x4	45	12	300	36	900	4	100	210831
CXI-12 9x4	90	12	300	9	230	4	100	210833
CXI-12 12x4	90	12	300	12	300	4	100	210834
CXI-12 18x4	90	12	300	18	450	4	100	210835
CXI-12 24x4	90	12	300	24	600	4	100	210836
CXI-12 30x4	90	12	300	30	750	4	100	210837
CXI-12 36x4	90	12	300	36	900	4	100	210838

2 x JUI 4 ( 211220)



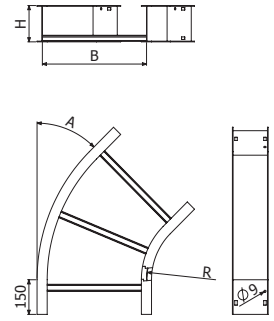
CXI 'A' - 'R' 'B'x'H'

CPI H6



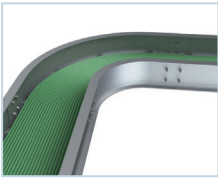
CPI 'A' - 'R' 'B'x'H'

	A (°)	R		B		H		AL
		inch	mm	inch	mm	inch	mm	REF
CPI45-24 12X6	45	24	600	12	300	6	150	210618
CPI45-24 18X6	45	24	600	18	450	6	150	210619
CPI45-24 24X6	45	24	600	24	600	6	150	210620
CPI45-24 30X6	45	24	600	30	750	6	150	210621
CPI45-24 36X6	45	24	600	36	900	6	150	210622
CPI90-24 9X6	90	24	600	9	230	6	150	210623
CPI90-24 12X6	90	24	600	12	300	6	150	210624
CPI90-24 18X6	90	24	600	18	450	6	150	210625
CPI90-24 24X6	90	24	600	24	600	6	150	210626
CPI90-24 30X6	90	24	600	30	750	6	150	210627
CPI90-24 36X6	90	24	600	36	900	6	150	210628

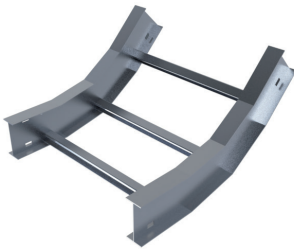


CPI 'A' - 'R' 'B'x'H'

2 x JUI 6 ( 211222)

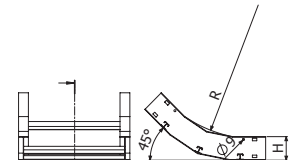


CCI H6



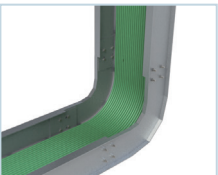
CCI 'A' - 'R' 'B'x'H'

	A (°)	R		B		H		AL
		inch	mm	inch	mm	inch	mm	REF
CCI45-24 9X6	45	24	600	9	230	6	150	210788
CCI45-24 12X6	45	24	600	12	300	6	150	210789
CCI45-24 18X6	45	24	600	18	450	6	150	210790
CCI45-24 24X6	45	24	600	24	600	6	150	210791
CCI45-24 30X6	45	24	600	30	750	6	150	210792
CCI45-24 36X6	45	24	600	36	900	6	150	210793
CCI90-24 9X6	90	24	600	9	230	6	150	210794
CCI90-24 12X6	90	24	600	12	300	6	150	210795
CCI90-24 18X6	90	24	600	18	450	6	150	210796
CCI90-24 24X6	90	24	600	24	600	6	150	210797
CCI90-24 30X6	90	24	600	30	750	6	150	210798
CCI90-24 36X6	90	24	600	36	900	6	150	210799



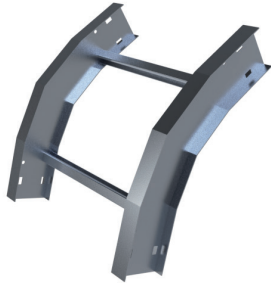
CCI 'A' - 'R' 'B'x'H'

2 x JUI 6 ( 211222)



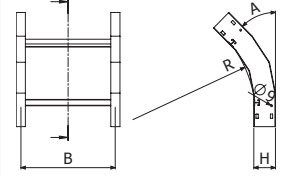


## CXI H6



CXI 'A' - 'R' 'B'x'H'

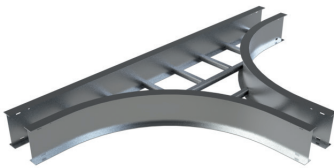
	A (°)	R		B		H		AL
		inch	mm	inch	mm	inch	mm	REF
CXI45-24 9X6	45	24	600	9	230	6	150	210959
CXI45-24 12X6	45	24	600	12	300	6	150	210960
CXI45-24 18X6	45	24	600	18	450	6	150	210961
CXI45-24 24X6	45	24	600	24	600	6	150	210962
CXI45-24 30X6	45	24	600	30	750	6	150	210963
CXI45-24 36X6	45	24	600	36	900	6	150	210964
CXI90-24 9X6	90	24	600	9	230	6	150	210965
CXI90-24 12X6	90	24	600	12	300	6	150	210966
CXI90-24 18X6	90	24	600	18	450	6	150	210967
CXI90-24 24X6	90	24	600	24	600	6	150	210968
CXI90-24 30X6	90	24	600	30	750	6	150	210969
CXI90-24 36X6	90	24	600	36	900	6	150	210970



CXI 'A' - 'R' 'B'x'H'

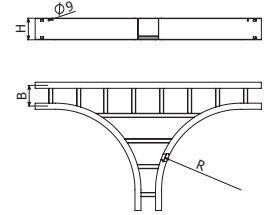
2 x JUI 6 ( 211222)

## TEI H4, H5, H6



TEI-'R' 'B'x'H'

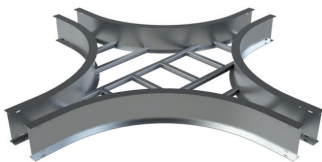
	R		B		H		AL
	inch	mm	inch	mm	inch	mm	REF
TEI-12 9x4	12	300	9	230	4	100	210990
TEI-12 12x4	12	300	12	300	4	100	210991
TEI-12 18x4	12	300	18	450	4	100	210992
TEI-12 24x4	12	300	24	600	4	100	210993
TEI-12 30x4	12	300	30	750	4	100	210994
TEI-12 36x4	12	300	36	900	4	100	210995
TEI-24 9x6	24	600	9	230	6	150	211034
TEI-24 12x6	24	600	12	300	6	150	211035
TEI-24 18x6	24	600	18	450	6	150	211036
TEI-24 24x6	24	600	24	600	6	150	211037
TEI-24 30x6	24	600	30	750	6	150	211038
TEI-24 36x6	24	600	36	900	6	150	211039



TEI-'R' 'B'x'H'

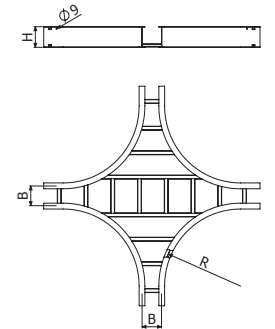
2 x JUI 4 ( 211220)  
2 x JUI 5 ( 211221)  
2 x JUI 6 ( 211222)

## CRI H4, H5, H6



CRI-'R' 'B'x'H'

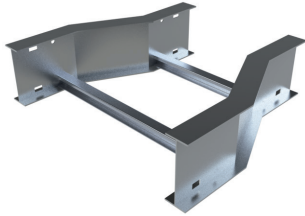
	R		B		H		AL
	inch	mm	inch	mm	inch	mm	REF
CRI-12 9x4	12	300	9	230	4	100	211047
CRI-12 12x4	12	300	12	300	4	100	211048
CRI-12 18x4	12	300	18	450	4	100	211049
CRI-12 24x4	12	300	24	600	4	100	211050
CRI-12 30x4	12	300	30	750	4	100	211051
CRI-12 36x4	12	300	36	900	4	100	211052
CRI-24 9x6	24	600	9	230	6	150	211091
CRI-24 12x6	24	600	12	300	6	150	211092
CRI-24 18x6	24	600	18	450	6	150	211093
CRI-24 24x6	24	600	24	600	6	150	211094
CRI-24 30x6	24	600	30	750	6	150	211095
CRI-24 36x6	24	600	36	900	6	150	211096



CRI-'R' 'B'x'H'

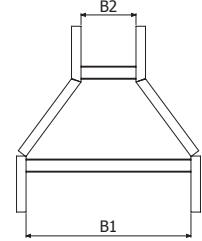
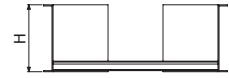
2 x JUI 4 ( 211220)  
2 x JUI 5 ( 211221)  
2 x JUI 6 ( 211222)

## RCI H4, H5, H6




RCI-'B1'/B2'x'H'

	B1		B2		H		AL
	inch	mm	inch	mm	inch	mm	REF
RCI 12/9x4	12	300	9	230	4	100	211143
RCI 18/12x4	18	450	12	300	4	100	211145
RCI 18/9x4	18	450	9	230	4	100	211146
RCI 24/18x4	24	600	18	450	4	100	211148
RCI 24/12x4	24	600	12	300	4	100	211149
RCI 24/9x4	24	600	9	230	4	100	211150
RCI 30/24x4	30	750	24	600	4	100	211151
RCI 30/18x4	30	750	18	450	4	100	211152
RCI 30/12x4	30	750	12	300	4	100	211153
RCI 36/30x4	36	900	30	750	4	100	211154
RCI 36/24x4	36	900	24	600	4	100	211155
RCI 36/18x4	36	900	18	450	4	100	211156
RCI 12/9x6	12	300	9	230	6	150	211169
RCI 18/12x6	18	450	12	300	6	150	211170
RCI 18/9x6	18	450	9	230	6	150	211171
RCI 24/18x6	24	600	18	450	6	150	211172
RCI 24/12x6	24	600	12	300	6	150	211173
RCI 24/9x6	24	600	9	230	6	150	211174
RCI 30/24x6	30	750	24	600	6	150	211175
RCI 30/18x6	30	750	18	450	6	150	211176
RCI 30/12x6	30	750	12	300	6	150	211177
RCI 36/30x6	36	900	30	750	6	150	211178
RCI 36/24x6	36	900	24	600	6	150	211179
RCI 36/18x6	36	900	18	450	6	150	211180

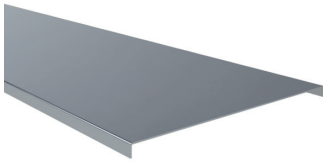


RCI-'B1'/B2'x'H'

 B2 ≤ B1  
 2 x JUI 4 ( 211220)  
 2 x JUI 5 ( 211221)  
 2 x JUI 6 ( 211222)



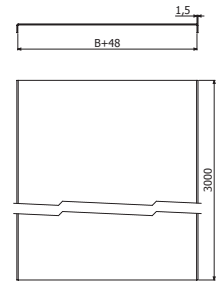
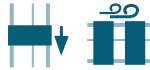
## TI



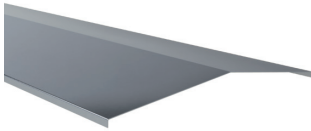
L = 3 m (10 ft)

	B		e	AL
	inch	mm	mm	REF
TI 9 3M	9	230	1,5	212081
TI 12 3M	12	300	1,5	212082
TI 18 3M	18	450	1,5	212083
TI 24 3M	24	600	1,5	212084
TI 30 3M	30	750	1,5	212085
TI 36 3M	36	900	1,5	212086

4 x PTI ( 212095 ) → 1 x TI



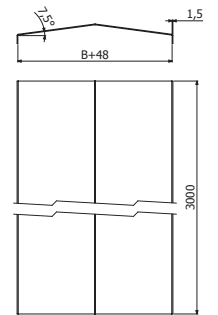
## T2AI



L = 3 m (10 ft)

	B		e	AL
	inch	mm	mm	REF
T2AI 9 3M	9	230	1,5	212088
T2AI 12 3M	12	300	1,5	212089
T2AI 18 3M	18	450	1,5	212090
T2AI 24 3M	24	600	1,5	212091
T2AI 30 3M	30	750	1,5	212092
T2AI 36 3M	36	900	1,5	212093

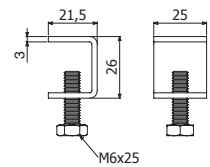
4 x PT2AI ( 212094 ) → 1 x T2AI



## PTI



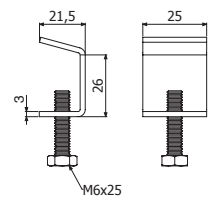
	Pap	e	AL
	N-m	mm	REF
PTI	6	3	212095



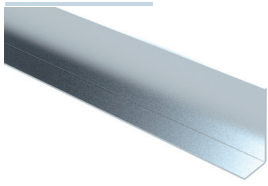
## PT2AI



	Pap	e	AL
	N-m	mm	REF
PT2AI	6	3	212094

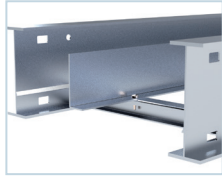
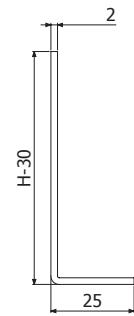


**PSI**

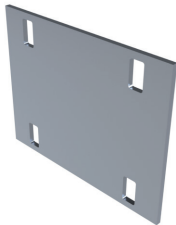


	H		X	AL
	inch	mm	mm	REF
PSI 4	4	100		218701
PSI 6	6	150		218703
DIN7504 4,8X19	-	-		-

4 x DIN7504 (1000 <-> 1000 mm)

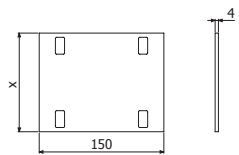


**JUI**

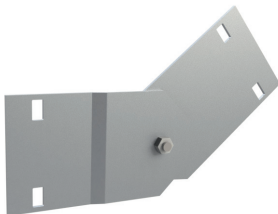


	H		X	AL
	inch	mm	mm	REF
JUI 4	4	100	94	211220
JUI 6	6	150	144	211222

4/50 x B3 i304 ( 212096)

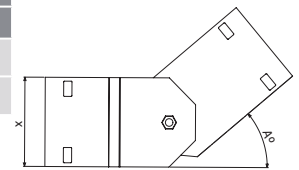


**JUI-A**

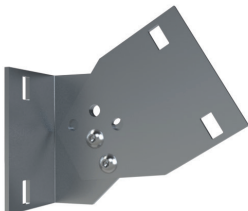


	H		X	AL
	inch	mm	mm	REF
JUI-A 4	4	100	94	211223
JUI-A 6	6	150	144	211225

4/50 x B3 i304 ( 212096)

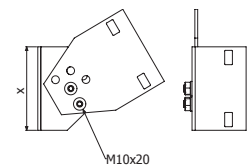


**JUI-L**

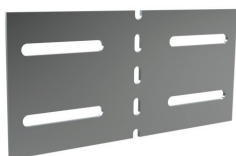


	H		X	AL
	inch	mm	mm	REF
JUI-L 4	4	100	94	215062
JUI-L 6	6	150	144	215064

4/50 x B3 i304 ( 212096)

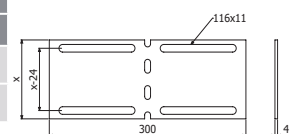


**JUI-B**



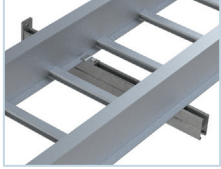
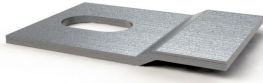
	H		X	AL
	inch	mm	mm	REF
JUI-B 4	4	100	94	211236
JUI-B 6	6	150	144	211238

4/50 x B3 i304 ( 212096)





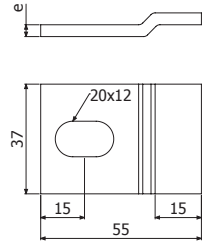
**BI**



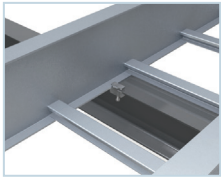
	e	AL
	mm	REF
BIS	4	214472
BIR	4	215445



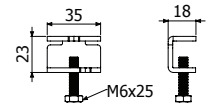
SP/SPD --> DIN933 M10X30 ( 217547 - i304 ) + TM41 M10 ( 217584 - GC )  
 BIS -> IL / IS  
 BIR -> IR



**BEV**



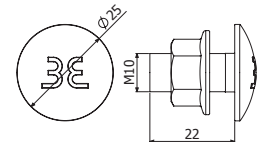
	H		GC	i304
	inch	mm	REF	REF
BEV	6	150	211805	214473



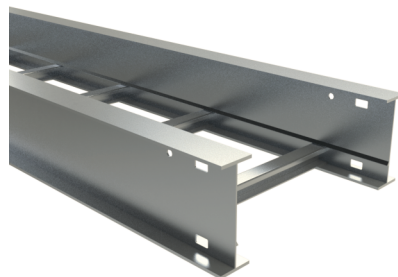
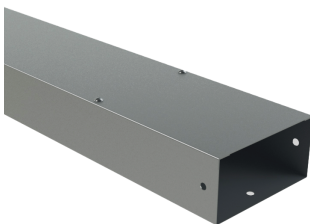
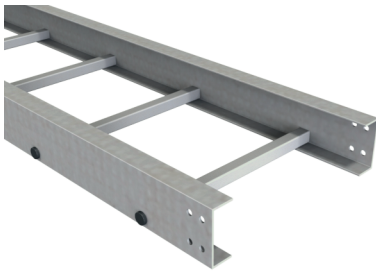
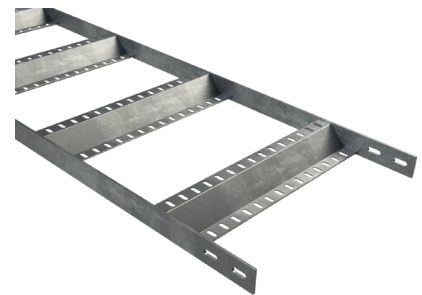
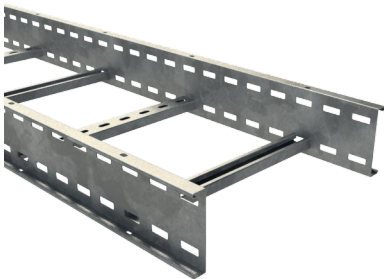
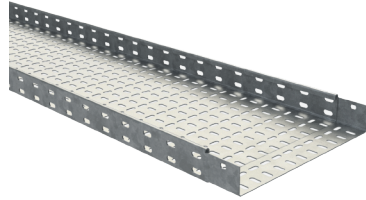
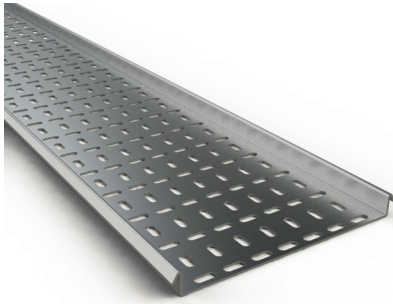
**B3**



	Pap	i304	i316
	N.m	REF	REF
B3-50	35	212096	215575



**Request our global catalogue  
to know other available products**



**Fiberglass, Aluminum, Stainless Steel  
Reinforced Cable Ladders,  
Shipbuilding Products, Trunkings...**

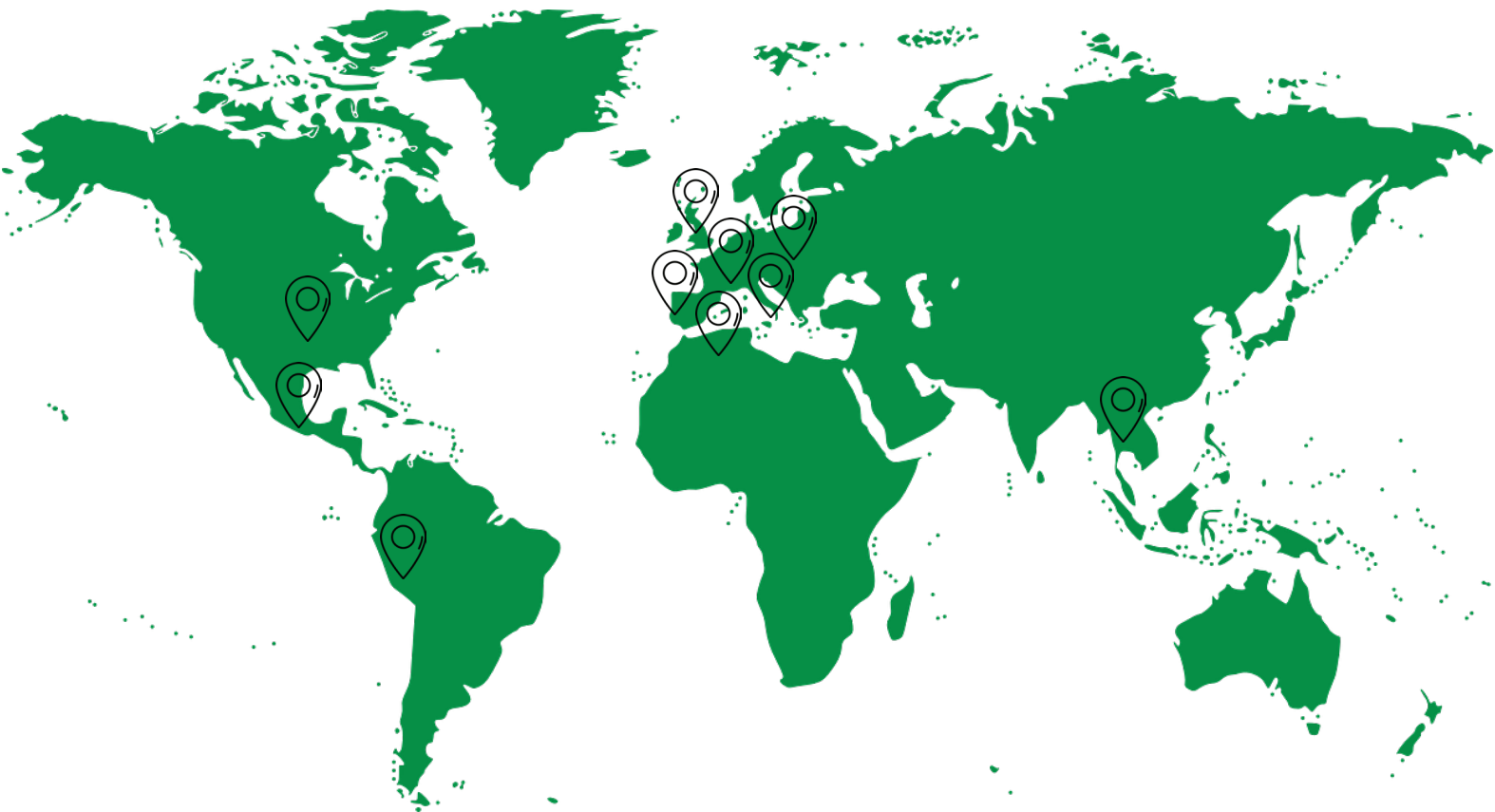
The over 30 years' experience of BASOR ELECTRIC in the industrial electrical installation industry makes us a leading manufacturer of cable trunking systems for large and small-scale engineering works.

**3EBasor**  
CABLE TRAY SPECIALIST

# The world is GREEN

## Aluminum Cable ladders

**50** Countries with permanent stock  
**1300** Global distributors  
**10** Own subsidiaries



### AMERICA

**USA** Basor Electric Inc. (Illinois)

**MEXICO** Basor México SAPI de CV. (Mexico DF)

**PERU** Basor Perú SAC. (Lima)

### EUROPE

**PORTUGAL** Basor Caminho de Cabos LDA. (Barreiro)

**FRANCE** Basor SARL. (Paris)

**HUNGARY** Basor Elektro KFT. (Budapest)

**UK** Basor Electric LTD (Kent)

**ITALY** Basor Electric SRL (Parma)

### AFRICA

**ALGERIA** Basor Electric SARL. (Argel)

### ASIA

**THAILAND** BasorThai (Bangkok)

# **BE**Basor

CABLE TRAY SPECIALIST

## **BASOR ELECTRIC INC.**

604 Mulberry street Milstadt  
Illinois 62260  
USA  
customer.service@basor.com



**LinkedIn**  
Basor Electric S.A



**Twitter**  
@Basorelectric



**Youtube**  
youtube.com/user/  
basorelectric



**Web**  
www.basor.com